



MultiXel

DS-40UB



Multi Function Fractional CO₂ Laser System

simultaneously treats the epidermis for pigmentation and
and the dermis for skin tightening, acne scars, deeper
and enlarged pores. The overall skin texture and tone is
. It is safe with a low pain level, and can be used to treat the
k, chest, hand and arms.

EASY
SAFETY
HIGH QUALITY



MultiXel

Multi Function Fractional CO₂ Laser System



Collagen Remodeling

- Fine Line
- Pores
- Scars
- Wrinkles

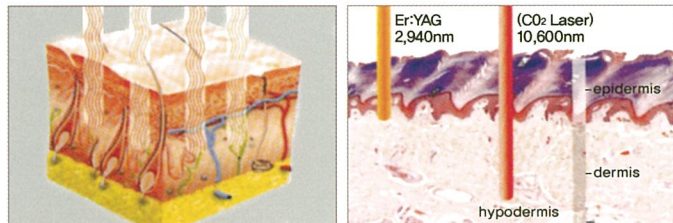
Resurfacing

- Skin Tone
- Skin Texture
- Skin Tightening

Pigment

- Nevus
- Freckles
- Dark Spots

Micro Thermal Hole Zone



Produces micro thermal hole zones at specific depths while sparing the tissue surrounding each wound.

MultiXel simultaneously treats the epidermis for pigmentation and fine lines and the dermis for skin tightening, acne scars, deeper wrinkles and enlarged pores. The overall skin texture and tone is improved. It is safe with a low pain level, and can be used to treat the face, neck, chest, hand and arms.

MultiXel produces arrays of micro-ablative zones, eliminating discolorations at the epidermis, and reducing volumetric tissues at the dermis, while sparing the tissues surrounding each ablative zone. At specific depth of the dermis, the deeper micro-thermal zones cause immediate collagen contraction, and long-term collagen remodelling. During each treatment, only 6~20% of the whole treatment area is ablated, with 80~94% of tissue remains intact and acts as a natural supporting bandage. As a result, downtime is minimal and healing is very fast.

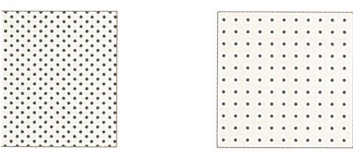
Depending on the applied energy level(Energy, density, depth), strong thermal effect takes place in volumetric area at a depth from 100 to 1000 microns.

on of Ablation and Thermal damage

tion

- urgery Fractional Resurfacing
- urgery Wrinkle Reduction
- rect Pinhole Therapy
- urgery Acne Scar Reduction
- urgery Large Pore Reduction
- l Ablation & Thermal Damage

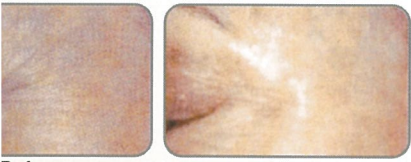
ss, Safety, Quick recovery time



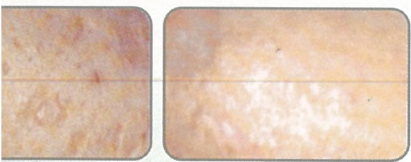
ighting



Before After



Before After



Before After



Before After



Multi Function Fractional CO₂ Laser System



Technical Specifications

Laser Type	CO ₂ Laser
Laser Tube	Sealed-off CO ₂
Wavelength	10.6 microns, invisible infrared
Dominant Mode	TEM ₀₀
Divergence	< 3mrad
Power-on-Tissue	CW 1 ~ 30W
Peak Power	315W at 90us
Aiming Beam	650nm, 15mW
Operating Mode	Fractional Scanning Mode Ultra Pulse Mode, 90us ~ 900us Super Pulse Mode, A ~ H Mode

Fractional Scanning Mode

Scan Area	Min 3×3mm Max 15×15mm
Density Level	1 ~ 5 Level
Depth Level	Up to 7 Step

General Features

Electrical Requirements	220V AC, Single Phase, 50 Hz/60Hz
Cooling System	Water Cooling with Sealed closed circuit
Dimensions	350(W)×360(D)×1120(H)mm
Weight	40kg

Overseas marketing : D.S.E.

Address : #105, Byok san 3 cha Digital valley 212-13, Guro-3Dong, Guro-Gu, Seoul Korea
Tel : 82-2-2025-1151 Fax:82-2-2025-1154 E-mail : dsemed@dsemed.com